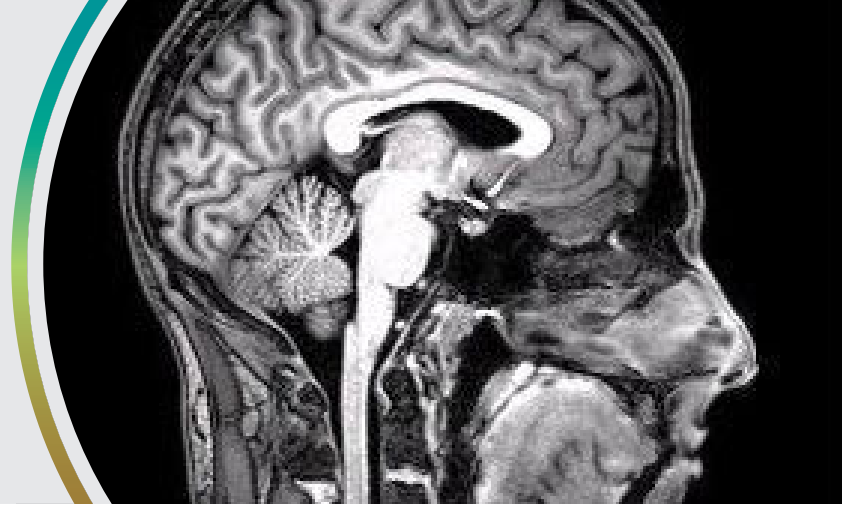


Brain Structure and Clinical Endpoints in DM2 (BraCE-DM2)



Researcher at Wake Forest University is interested in learning how the brain is impacted by myotonic dystrophy type 2 (DM2).

You may be eligible to participate in the study if:

- You are symptomatic and have been diagnosed with DM2.
- You have no history of active psychiatric, dementia, and other neurological disorders.
- You can walk independently (cane and walking sticks are permitted).
- You do not have certain kinds of metal implantation in your body which prevent you to have MRI.

The study involves one full-day or two half-day visits to Atrium Health Wake Forest Baptist in Winston Salem, NC. We are located approximately 30-minute from Piedmont Triad Airport and 1.5-hour drive from Charlotte and Raleigh-Durham Airports. The study includes assessments already used in clinical practice as a standard of care, including brain MRI, cognitive testing, motor performance, and a series of questionnaires. Participants will be compensated for their time and travel.

If you would like more information about the study, please contact the study coordinator, Constance Linville at 336-716-4568, or at clinvill@wakehealth.edu

The Principal Investigator of the study is Dr. Araya Puwanant. The study is sponsored by the National Institute of Health (NIH).

336-716-4568

clinvill@wakehealth.edu

WakeHealth.edu/BelInvolved

BE INVOLVED. VOLUNTEER FOR A CLINICAL TRIAL



Wake Forest University School of Medicine is the academic core of Atrium Health.